

- Fits Road handlebar with minimum **70 mm** straight section end.
- Fits inner \varnothing **16.5-20 mm** tube.
- Fits multi-speed chains up to Campagnolo® 11 speed hollow pin chain.
- Please read these instructions before first use.

MAINTENANCE

- Lubricate and maintain tool with Teflon® based lubricant as needed.
- To prevent rusting, keep tool dry.

HOW TO STORE NINJA C IN HANDLEBAR

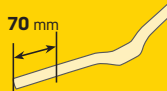
LIMITATIONS

1 Handlebar with minimum 70 mm straight section end

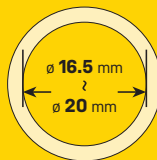
ROAD HANDLEBARS



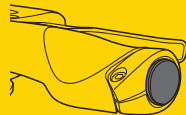
FLAT BARS



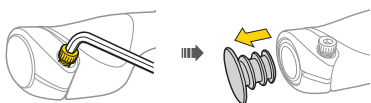
2 Fits inner \varnothing 16.5-20 mm tube



3 Fits grips with end caps

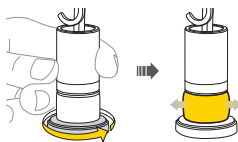


STEP 1 (Example for grips with end caps)

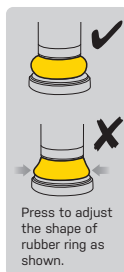


Loosen bolt and remove end cap of grip on both sides. (Depends on the type of handlebar)

STEP 2

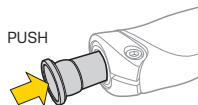


Turn the cap to expand the rubber ring as little as necessary.



Press to adjust the shape of rubber ring as shown.

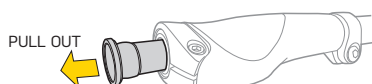
STEP 3



Push NINJA C into the end of handlebar on both sides.

If NINJA C does not fit properly into handlebar, adjust tension of rubber ring as necessary and reinstall.

HOW TO REMOVE NINJA C FROM HANDLEBAR

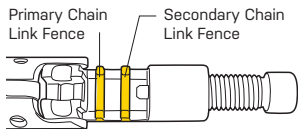


WARNING

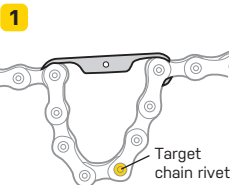
Periodically check that NINJA C is seated in handlebar properly.



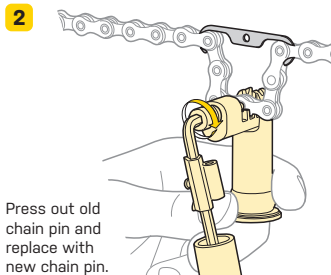
HOW TO REPLACE CHAIN PIN



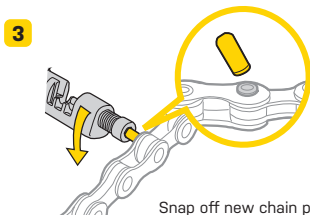
Use Primary Chain Link Fence to install or remove chain pin. Use Secondary Chain Link Fence to loosen stiff links.



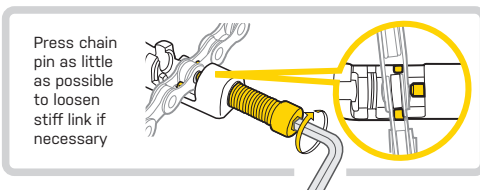
Hook chain and hold the target chain rivet in center position.



Press out old chain pin and replace with new chain pin.



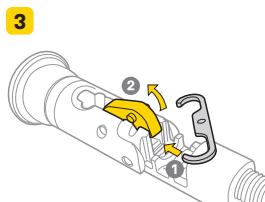
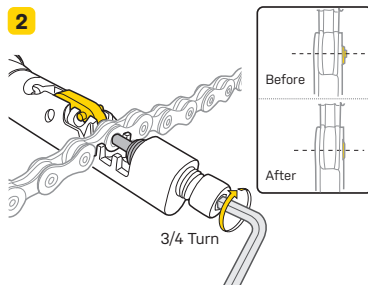
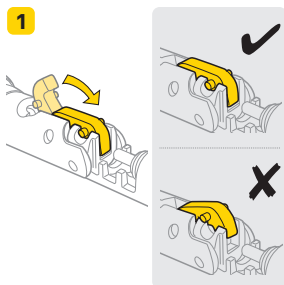
Snap off new chain pin guide.



Press chain pin as little as possible to loosen stiff link if necessary

HOW TO INSTALL CAMPAGNOLO® 11-SPEED HOLLOW CHAIN PIN

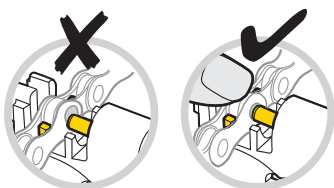
After pressing the special replacement pin into Campagnolo® 11-Speed chain and breaking off the guide portion, the break off end of the chain rivet is required to be peened to prevent chain failure.



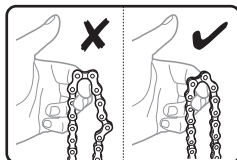
The rivet anvil might be too tight to release after use. Lift rivet anvil with chain hook for storage.

WARNING

When pressing in the chain pin, push down on the top of the chain to keep it fully engaged in the chain tool cradle. Make sure the press pin of the chain tool is centered against the chain pin.



Inspect chain rivet again and be sure chain links can bend freely after replacement.



WARRANTY

2-year Warranty. All mechanical components against manufacturer defects only.

Warranty Claim Requirements

To obtain warranty service, you must have your original sales receipt. Items returned without a sales receipt will assume that the warranty begins on the date of manufacture. All warranties will be void if the product is damaged due to user crash, abuse, system alteration, modification, or used in any way not intended as described in this manual.

* The specifications and design are subject to change without notice.

Please contact your Topeak dealer with any questions. For USA customer service, call: 1-800-250-3068
www.topeak.com

* Campagnolo® is a registered trademark of Campagnolo S.r.l.

* Teflon® is a registered trademark of DuPont.