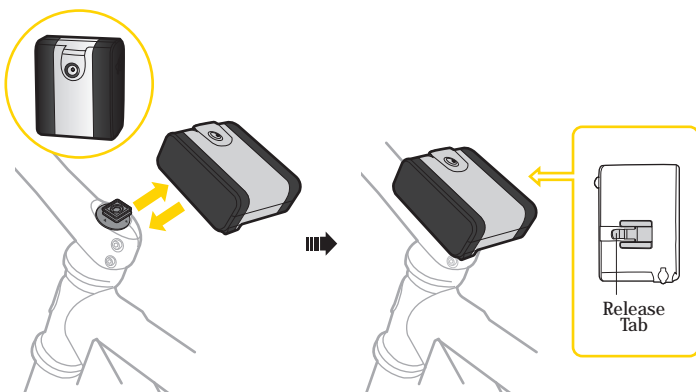


## INSTALL POWERPACK ON BATTERY HOLDER (F66)



### Enduro PowerPack

14.4V 4400mAh Lithium Ion Rechargeable Battery

Burn Time (approx) :

MoonShine HID  
10W - 5.1 hours (constant use)  
7W - 5.6 hours (constant use)

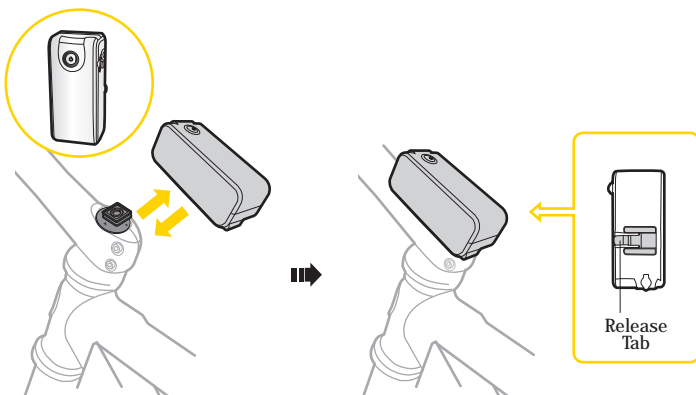
MoonShine 3H  
20W - 3.2 hours (constant use)  
10W - 6.0 hours (constant use)  
5W - 10.0 hours (constant use)

WhiteLite HP 5W  
5W - 11.0 hours (constant use)  
3W - 19.2 hours (constant use)  
1W - 47.6 hours (constant use)

Size (LxWxH) :  
10.9 x 8.4 x 4.2 cm

Weight : 473 grams

Art no. : TMS-SP64



### PowerPack

14.4V 2200mAh Lithium Ion Rechargeable Battery

Burn Time (approx) :

MoonShine HID  
10W - 2.5 hours (constant use)  
7W - 2.8 hours (constant use)

MoonShine 3H  
20W - 1.6 hours (constant use)  
10W - 3.0 hours (constant use)  
5W - 5.0 hours (constant use)

WhiteLite HP 5W  
5W - 5.2 hours (constant use)  
3W - 9.8 hours (constant use)  
1W - 24.6 hours (constant use)

Size (LxWxH) :  
10.9 x 4.7 x 4.2 cm

Weight : 270 grams

Art no. : TMS-SP63

\* Operating Temperature : -20°C ~ 45°C (-4°F ~ 113°F), Storage Temperature : -20°C ~ 60°C (-4°F ~ 140°F)

### Note:

- If charger serial number is Axxxx, standard charging time is 2.5 to 3 hours. When the charger LED becomes steady, unplug the charger and recharge again to reach full capacity. Total charging time is 5 to 6 hours.
- If charger serial number is Bxxxx, standard charging time is 5 to 6 hours. (Charging time and operating time may vary depending on ambient temperature.)
- Li-ion batteries may take 3 to 5 charging cycles to attain full capacity.
- If the battery does not give the proper run time after being fully charged, replace with a new battery pack.

## WARRANTY

90-day Warranty: All mechanical components against manufacturer defects only.

### Warranty Claim Requirements

To obtain warranty service, you must have your original sales receipt. Items returned without a sales receipt will assume that the warranty begins on the date of manufacture. All warranties will be void if the battery is damaged due to user crash, abuse, modification, or used in any way not intended as described in this manual.

\*The specifications and design are subject to change without notice.

Topeak products are available only from professional bicycle shops.

Please contact your nearest Topeak authorized bicycle dealer for any questions.

For customers in the USA, call: 1-800-250-3068 Website: [www.topeak.com](http://www.topeak.com)

Copyright © Topeak, Inc. 2007

